

O.NOVO TOILET WITH TOILET SEAT, INSTALLATION SYSTEM AND FLUSH PLATE
(COMBI-PACK) OVAL

PRODUCT INFORMATION

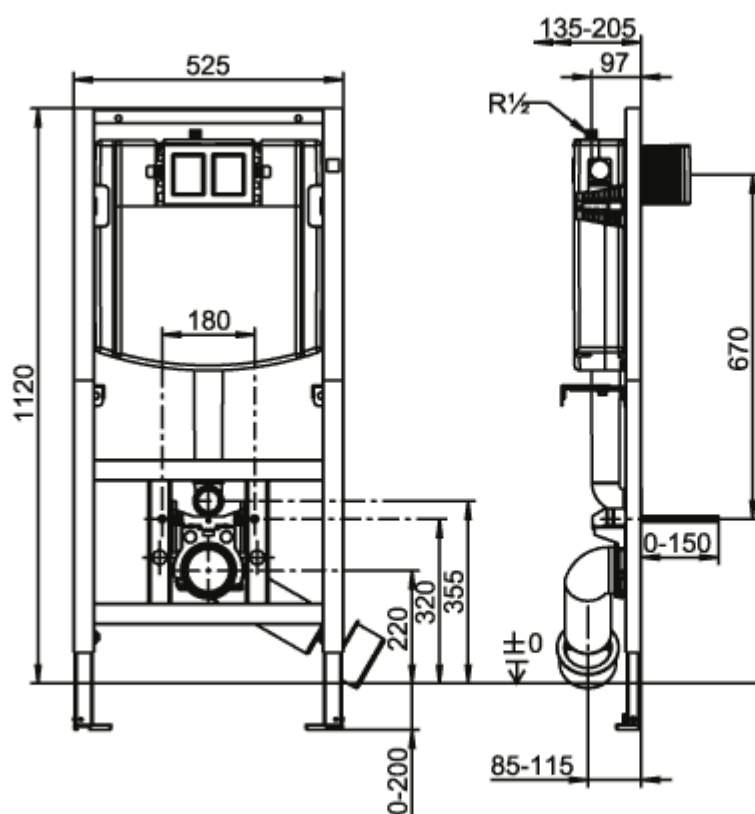


Article title	Villeroy & Boch O.novo Toilet with toilet seat, installation system and flush plate (Combi-Pack), wall- mounted, White Alpin
Article number	5660D301
Assembly / Assembly type	wall-mounted
Assembly instructions	not suitable for installation with flush valves
Scope of delivery	1 x washdown toilet, rimless , 1 x toilet element 1 x toilet seat and cover 1 x flush plate
Depth in mm	560
Width in mm	360
Height in mm	350
Collection	O.novo
Suitable for	Concealed cistern
Innovative flushing technology (with TwistFlush)	No
Innovative flushing technology (with TwistFlush[e ³])	No
Flush volume l	3 / 4,5 l
Wall-mounted - floor-standing	wall-mounted
Function	<ul style="list-style-type: none"> • with automatic lowering mechanism (SoftClosing) • with removable seat (QuickRelease)
Material	Sanitary ceramics
Colour name	White Alpin
Other material	Flush plate: Plastic Concealed cistern: Steel Toilet seat and cover: Duroplast
Other surfaces	Flush plate: glossy, Concealed cistern: matt Toilet seat and cover: glossy
Shape	Oval
Colour designation	White Alpin
Other colour designations	Flush plate: White, Toilet seat and cover: White Alpin
Antibacterial surface (with AntiBac)	No
Easy surface cleaning (CeramicPlus)	No
Rimless (mit DirectFlush)	Yes

Flush type	Washdown toilet
Integrated freshness solution (with ViFresh)	No
Outlet / outlet	horizontal outlet

TECHNICAL DRAWINGS

5660D301



The technical drawing shows two views of the R7000A machine:

- Front View (Left):** Shows a rectangular frame with a total width of 525 mm and a height of 1120 mm. The top section has a width of 180 mm. The bottom section features a circular component with a diameter of $\varnothing 200$. A vertical dimension of 230 mm is indicated from the base to the center of this circle.
- Side View (Right):** Shows the profile of the machine with a total height of 670 mm. The top section has a width of 97 mm. A curved surface is labeled R $\frac{1}{2}$. A horizontal dimension of 135-205 mm is shown at the top. A vertical dimension of 355 mm is indicated from the base to the center of the circular component. The base has a width of 85-115 mm. A horizontal dimension of $\varnothing 150$ is shown near the bottom right.